



# **PENSILSOLE**

**SOLAR CARPORT**



**WE SUPPORT  
SOLAR ENERGY.  
EVERYWHERE.**



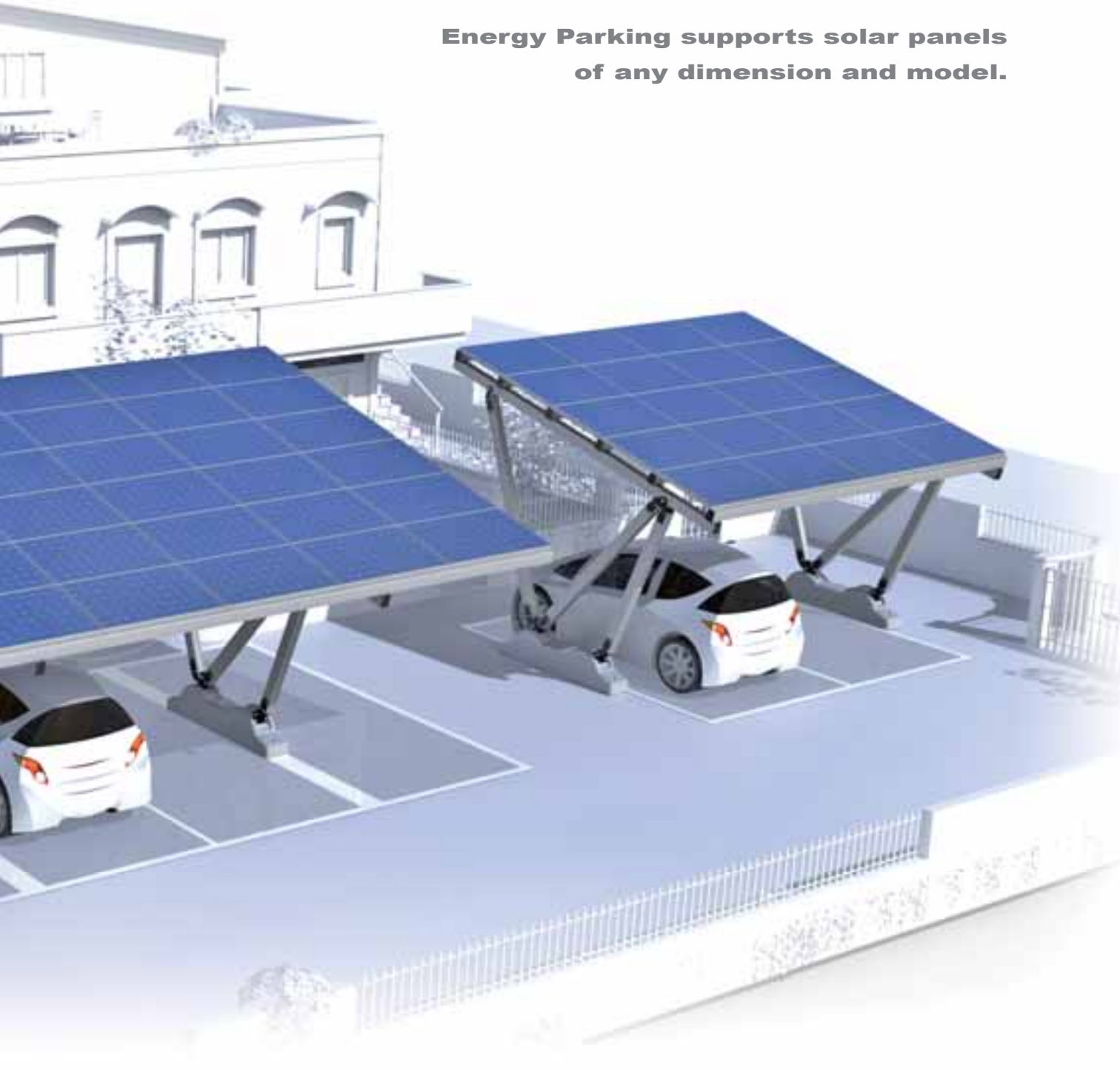
**GIULIO BARBIERI**  
Special Modular Coverings



## **ADD VALUE TO YOUR SPACE!**

**The installation of our carports requires  
no foundation works.**

**Energy Parking supports solar panels  
of any dimension and model.**



# SPECIFICATIONS – Models

## SUPPORTING STRUCTURE FEATURES:

- **Quick and easy installation without foundations**, as the provided concrete ballasts are fixed to the ground with anchor bolts and pegs according to soil consistency. **The structure can be modular combined and suit parking lots of any size.**
- The support frame allows a perfect static balance, providing **high resistances to snow and wind loads**. The structure is supplied with **structural analysis report** and a **15 years guarantee**.
- **Elegant design**: each component has been designed focusing on a certain purity of lines and looking for a clear and stylish shape, able to fit any architectural context.
- The structure consists of **silver anodized aluminium profiles** and **steel joints** treated by cataphoresis and polyester powder coated, technique used by car manufacturers to protect the mechanical components set in the external lower part of cars. **Therefore the structure needs no maintenance.**
- The structure **supports any model and dimension of solar panel**.
- The structure is available in a **wide range of colours**:



### STANDARD



### OUT OF STANDARD



- Several **accessories** can be integrated in the solar carport, like the **watertight gasket to be inserted among the panels, the rain gutter and so on**.
- Ideal for sponsorship, as the supporting structure has been conceived for the installation of large advertising spaces. On demand LED bars are available for the night illumination.
- **COMPETITIVE PRICE** compared to those of other carports present in the market.

### OPTIONAL ADVERTISING SPACES



We do not supply PV panels: realize your project with the technology you prefer.

## DIMENSIONS

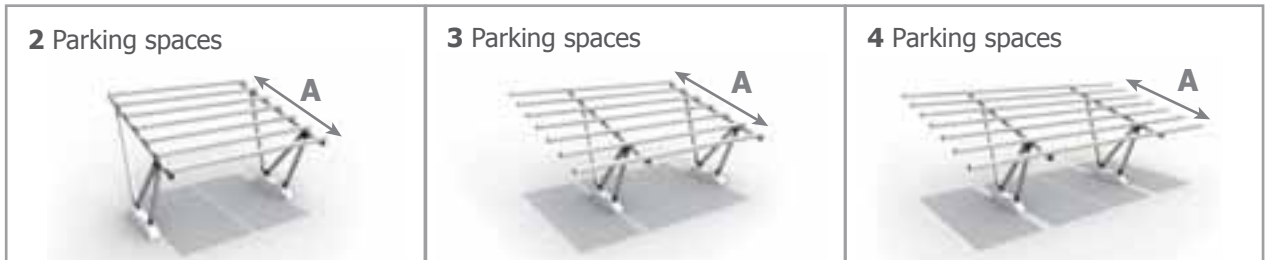
A "PencilSole" single structure is designed to cover long rows of parking spaces with purlins (A) whose maximum length is up to 600 cm.

## EXAMPLES OF MODULAR STRUCTURES WITH APPROXIMATE NUMBER OF SOLAR PANELS

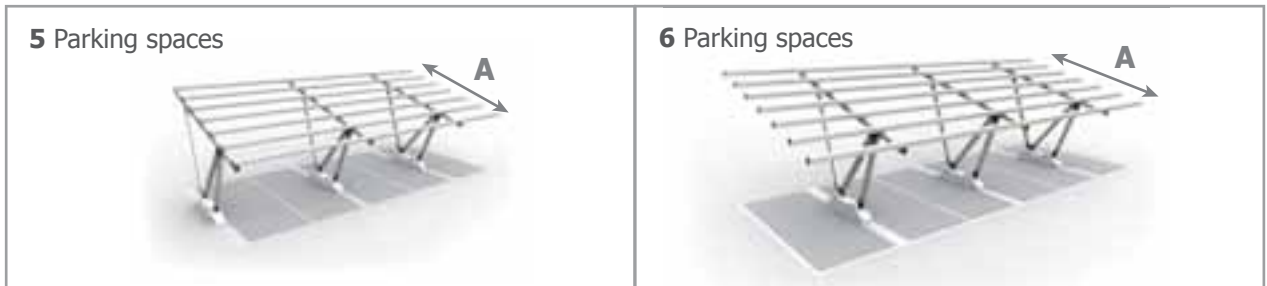
Here some structure versions, where the number of photovoltaic panels horizontally installed is quoted below.

The calculation is referred to standard panel dimensions available in the market: 1660 mm x 990 mm.

The structure supports ANY MODEL AND DIMENSION OF SOLAR PANEL.



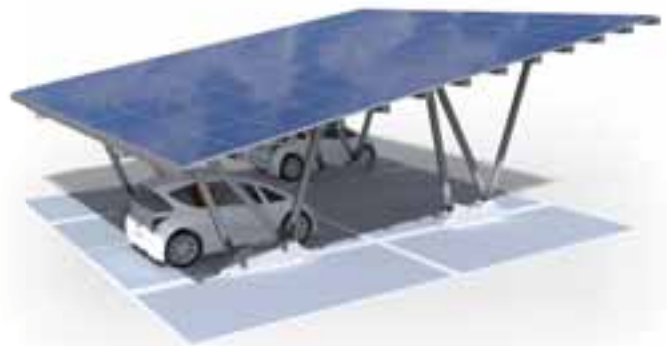
<b>A max</b>	500 cm	600 cm	500 cm	600 cm	500 cm	600 cm
PV Panels	15	18	25	30	30	36



<b>A max</b>	500 cm	600 cm	500 cm	600 cm
PV Panels	40	48	45	54

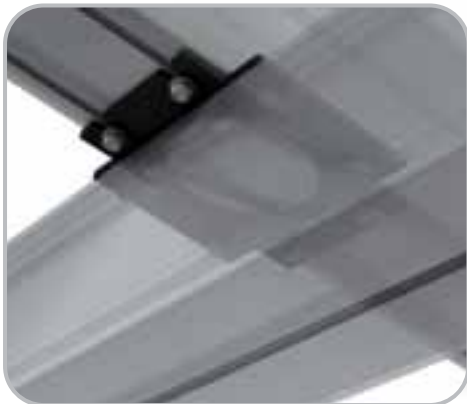
## SPECIAL SHAPE:

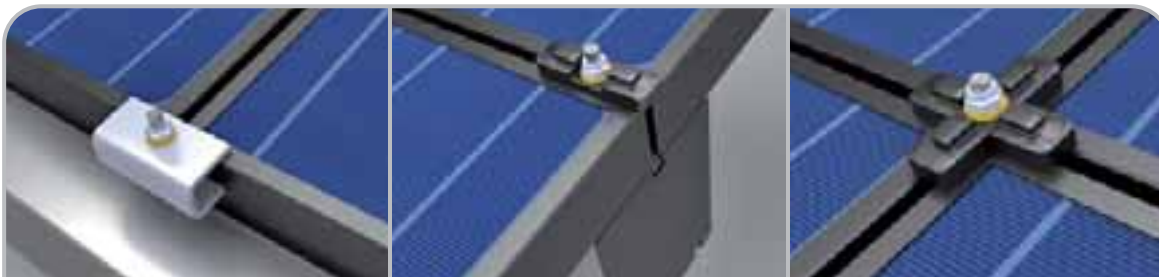
### COMBINED VERSION WITH 4 SUPPORTING LEGS



NOTE: On demand structure dimensions are custom made.

# TECHNICAL DETAILS





**SOLAR PANEL FASTENING SYSTEM**





**Giulio Barbieri S.p.A.**

[en.giuliobarbieri.it](http://en.giuliobarbieri.it)



[www.facebook.com/GiulioBarbieriSpa](https://www.facebook.com/GiulioBarbieriSpa)

Via Ferrara, 41 - 44028 Poggio Renatico (FE) - Italy  
[info@giuliobarbieri.it](mailto:info@giuliobarbieri.it)

Tel. (+39) 0532 82.15.11, Fax (+39) 0532 82.15.55